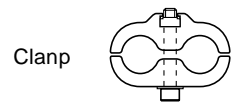
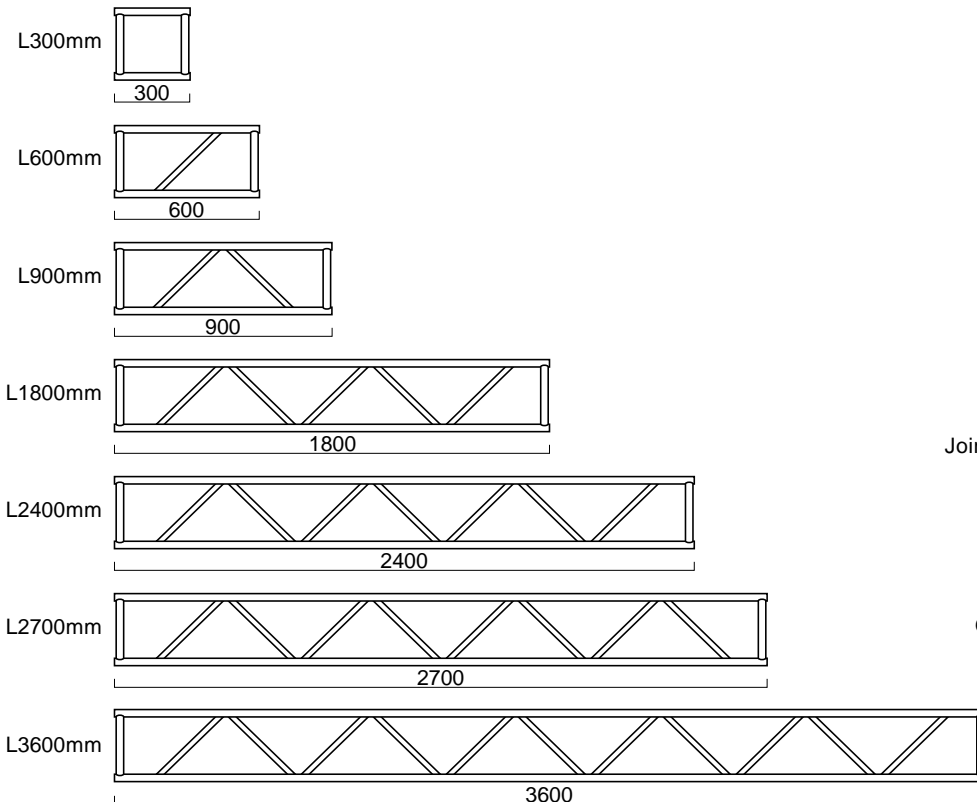
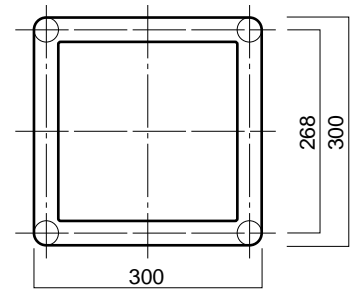
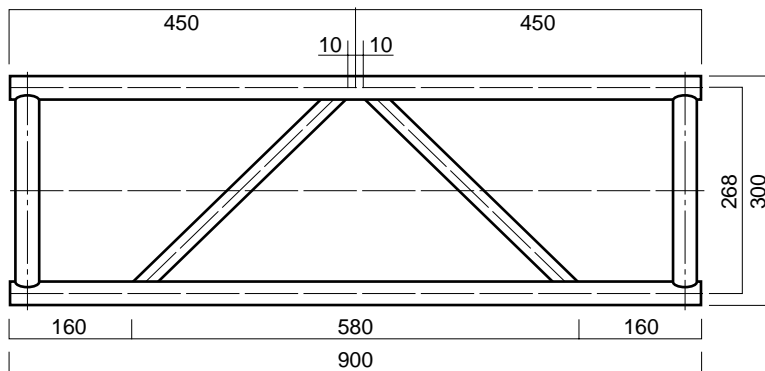


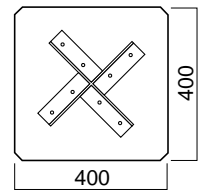


300mm square box truss (clamp type)

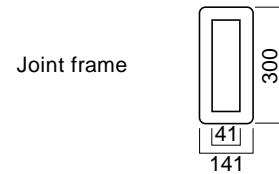
	Size(mm)	Weight(kg)
M system truss 300BOX [300mm x 300mm]	L300	1.8
	L600	2.5
	L900	3.7
	L1800	6.6
	L2400	8.6
	L2700	9.5
	L3600	12.3
Clanp	—	0.3
Base	400 x 400	3.5
Joint frame	300 x 141	0.5
Outrigar	450 x 292	0.7



Clanp



Base



Joint frame



Outrigar